


**PRODUCT DATA SHEET**
**QH9498**
**Our patented 3 dB 90° Hybrid Couplers provide:**

- Superior component performance starting at 3:1 Bandwidth.
- Thicker center boards for high power and increased repeatability.
- Bonded structures which eliminate any air gaps between substrates.
- More sections per bandwidth for better coupling flatness.
- Electrically shorter and physically smaller RF components.

**Features:**

High Power      Wide Bandwidths      Small Size      Excellent Amplitude Balance

**Electrical Specifications:**

Frequency:	200 - 650 MHz
Power:	200 W CW
Insertion Loss	0.5 dB Max.
VSWR:	1.40:1 Max.
Phase Balance:	± 5° dB Max.
Amplitude Balance:	± 0.4 dB Max.
Isolation:	18 dB Min.

**Mechanical Specifications:**

Type:	Surface Mount
Plating Options:	QH9498-Pb: Electrodeposited Tin/Lead
Size:	2.8 x 1.25 x 0.16"

**Port Configurations:**

Input	Output			
	J1	J2	J3	J4
J1	---	Isolated	-3 dB, 0°	-3 dB, -90°
J2	Isolated	---	-3 dB, -90°	-3 dB, 0°
J3	-3 dB, 0°	-3 dB, -90°	---	Isolated
J4	-3 dB, -90°	-3 dB, 0°	Isolated	---

**Werlatone's** breakthrough technology allows us to build our existing line of Broadband 3 dB High Power 90° Hybrid Couplers. Connectorized 3 dB 90° Hybrid Coupler models are available with a choice of connectors. Several of our existing High Power 3 dB 90° RF Couplers are three port designs, wherein the difference port is internally terminated with a high power termination. This eliminates the need for a customer supplied external load for each Hybrid Coupler.

**Restriction on use, duplication, or disclosure of proprietary information.** This document contains proprietary information which is the sole property of Werlatone, Inc.

Werlatone, Inc. 17 Jon Barrett Road Patterson, NY 12563 T:(845)278-2220 F:(845)278-3440 sales@werlatone.com www.werlatone.com

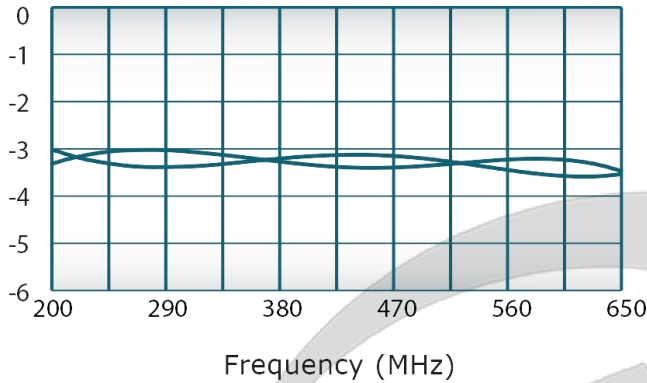


PRODUCT DATA SHEET

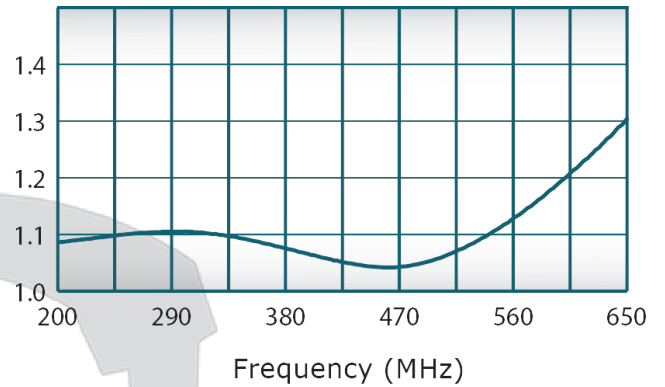
QH9498

**Performance Data (Specifications subject to change without notice):**

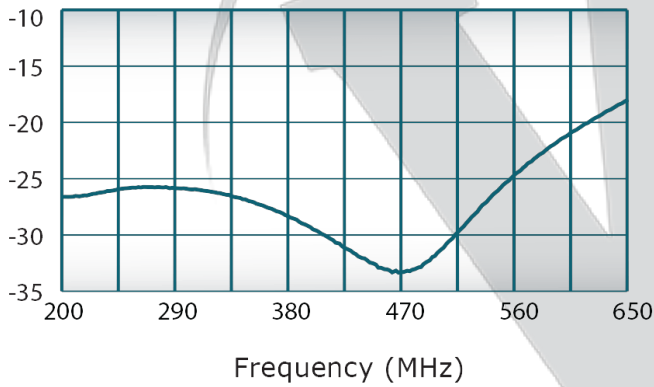
Coupling:



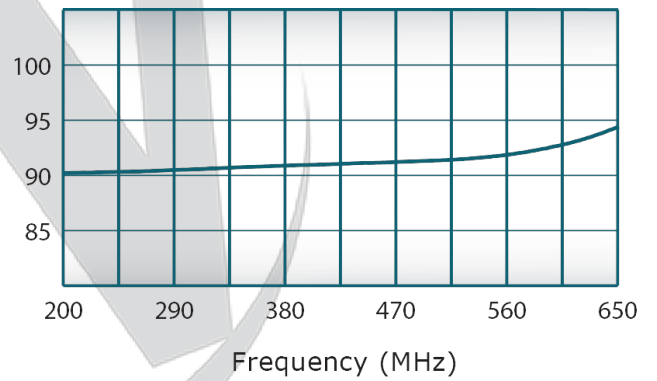
VSWR:



Isolation:



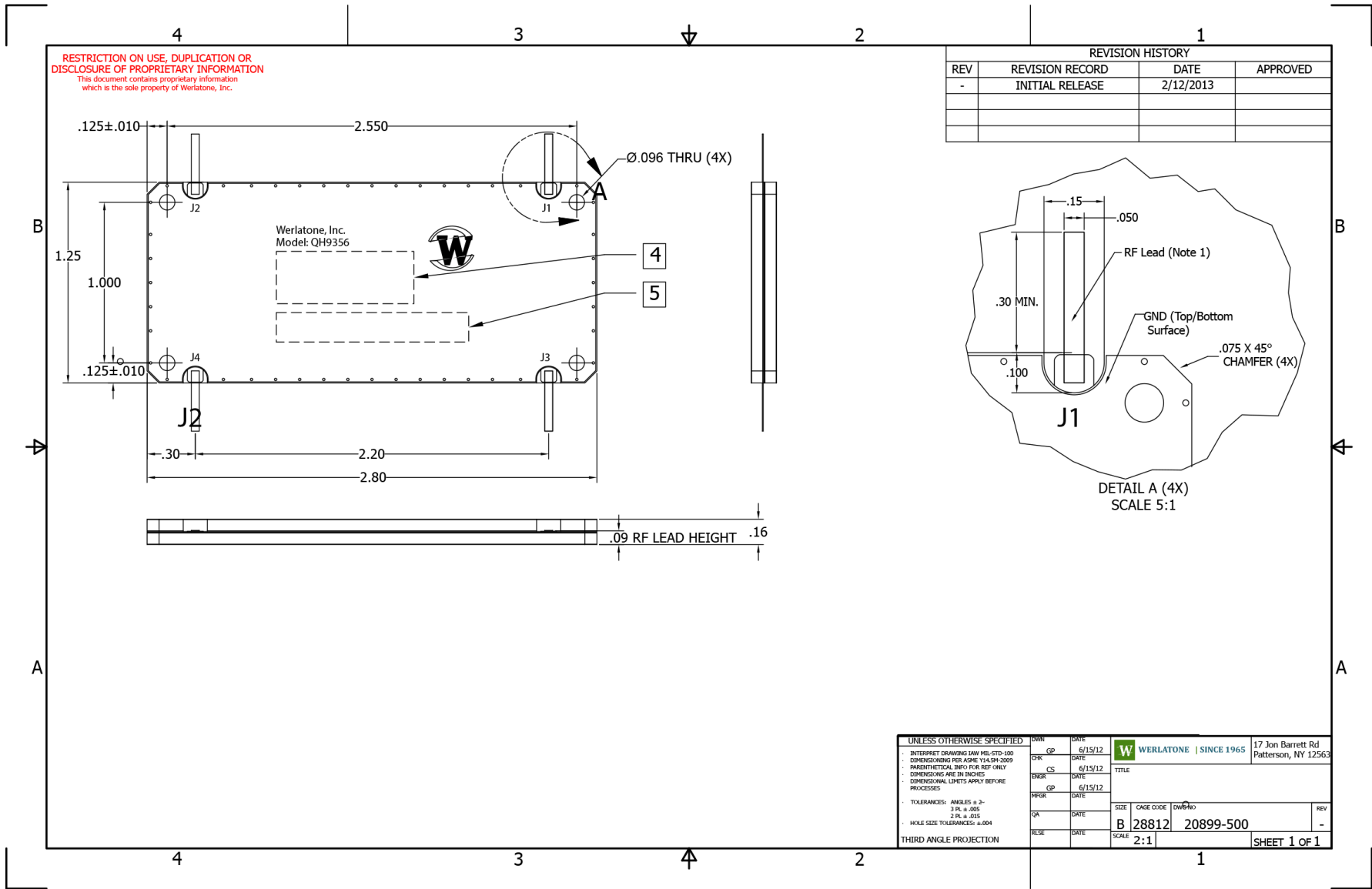
Phase Balance:



**Restriction on use, duplication, or disclosure of proprietary information.** This document contains proprietary information which is the sole property of

Werlatone, Inc.

Werlatone, Inc. 17 Jon Barrett Road Patterson, NY 12563 T:(845)278-2220 F:(845)278-3440 sales@werlatone.com www.werlatone.com



REVISION HISTORY			
REV	REVISION RECORD	DATE	APPROVED
-	INITIAL RELEASE	2/12/2013	

UNLESS OTHERWISE SPECIFIED		OWN	DATE	<b>WERLATONE</b>   SINCE 1965 17 Jon Barrett Rd Patterson, NY 12563
INTERPRET DRAWINGS IAW MIL-STD-100 DIMENSIONS PER ASME Y14.5M-2009 PARENTHETICAL INFO FOR REF ONLY DIMENSIONS ARE IN INCHES DIMENSIONAL LIMITS APPLY BEFORE PROCESSES		CP	6/15/12	
TOLERANCES: ANGLES ± 2° 3 PL ± .005 2 PL ± .015 HOLE SIZE TOLERANCES: ± .004		CHK	6/15/12	TITLE
THIRD ANGLE PROJECTION		ENGR	DATE	
		CP	6/15/12	
		MPGR	DATE	
		QA	DATE	SIZE CAGE CODE DWG NO
		RELE	DATE	<b>B 28812 20899-500</b>
			SCALE	<b>2:1</b>
				REV
				-
				SHEET 1 OF 1

Restriction on use, duplication, or disclosure of proprietary information. This document contains proprietary information which is the sole property of Werlatone, Inc.  
 Werlatone, Inc. 17 Jon Barrett Road Patterson, NY 12563 T:(845)278-2220 F:(845)278-3440 sales@werlatone.com www.werlatone.com